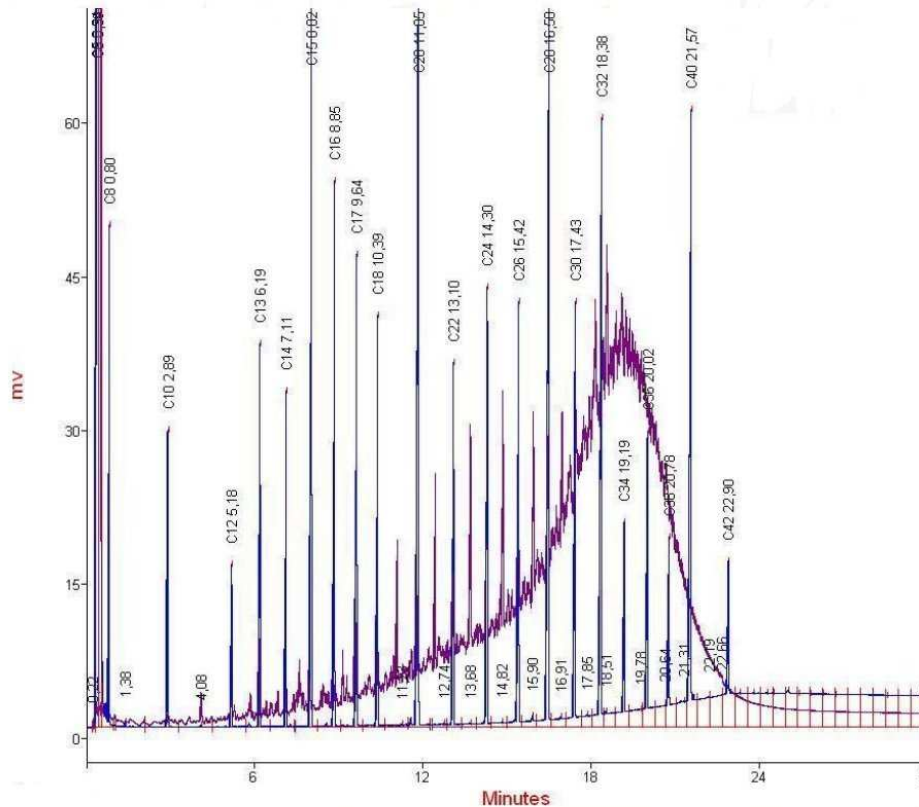


Analyse de produits lourds et distillation simulée

FID Haute Température et un Multi-injecteur - Logiciel de distillation simulée intégré



PET DIS REPORT

Sample Name :
Data File : C:\simdis\ .txt
Calibration File : C:\simdis\CALIBR1.txt

Solvent Exclusion Time : 0,00 Min.
Baseline Zero : 0,867

Uncorrected Total Sample Area : 14513,116
Corrected Total Sample Area : 14511,677

Start Of Materials : 0,02 Min.
End Of Materials : 29,97 Min.

D2887 Boiling Point - Mass Distribution

% off - BP	% off - BP	% off - BP	% off - BP	% off - BP	% off - BP
IBP 142	17,0 379	34,0 434	51,0 464	68,0 484	85,0 508
1,0 180	18,0 382	35,0 437	52,0 465	69,0 486	86,0 510
2,0 227	19,0 387	36,0 439	53,0 466	70,0 487	87,0 512
3,0 253	20,0 391	37,0 441	54,0 468	71,0 488	88,0 514
4,0 270	21,0 395	38,0 443	55,0 469	72,0 489	89,0 517
5,0 286	22,0 399	39,0 445	56,0 470	73,0 491	90,0 520
6,0 300	23,0 402	40,0 447	57,0 471	74,0 492	91,0 523
7,0 310	24,0 406	41,0 449	58,0 473	75,0 493	92,0 525
8,0 319	25,0 410	42,0 451	59,0 474	76,0 494	93,0 528
9,0 328	26,0 413	43,0 452	60,0 475	77,0 496	94,0 531
10,0 336	27,0 416	44,0 454	61,0 476	78,0 497	95,0 537
11,0 343	28,0 419	45,0 455	62,0 477	79,0 499	96,0 545
12,0 350	29,0 421	46,0 457	63,0 479	80,0 500	97,0 556
13,0 356	30,0 424	47,0 458	64,0 480	81,0 501	98,0 569
14,0 363	31,0 427	48,0 460	65,0 481	82,0 503	99,0 583
15,0 368	32,0 430	49,0 461	66,0 482	83,0 505	FBP 590
16,0 373	33,0 432	50,0 462	67,0 483	84,0 506	